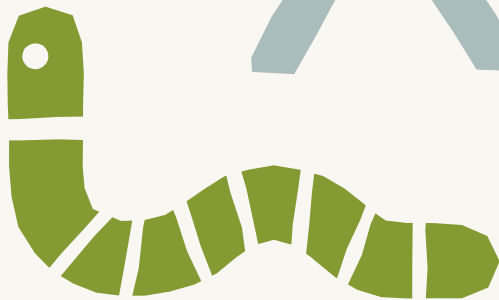
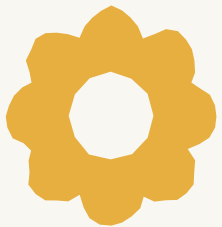


The Story So Far



National
Education
Nature Park

The story so far

The National Education Nature Park programme launched in autumn 2023, and more than 3,000 schools, nurseries and colleges have already joined.

The programme supports educators to put nature at the heart of education, so that we can improve young people's wellbeing, help them to develop vital skills for their futures and boost biodiversity across the country. In our rapidly changing world, this has never been more important.

Together children and young people are leading the way in creating a network of green spaces in schools, colleges and nurseries across England. They're exploring, mapping out and caring for their outdoor spaces, improving them for both people and wildlife while connecting to nature and learning green and digital skills.

It has been so exciting to see young people from all regions getting involved, and we're thrilled to share this snapshot report with you to celebrate your successes so far, as well as to look forward to what's coming up in the future for the programme.

As education staff, you're empowering the next generation to make a positive difference to both their own and to nature's future. The more educators that get involved the bigger impact we'll have, and so we thank you for joining us on this journey to a brighter future.

Dr Jessica Tipton
Head of the National Education Nature Park



[▶ Watch: how it works](#)

Nature Park in numbers

The National Education Nature Park has been commissioned as part of the Department for Education's [sustainability and climate change strategy](#).

Testing and shaping the programme



3,025

young people



39

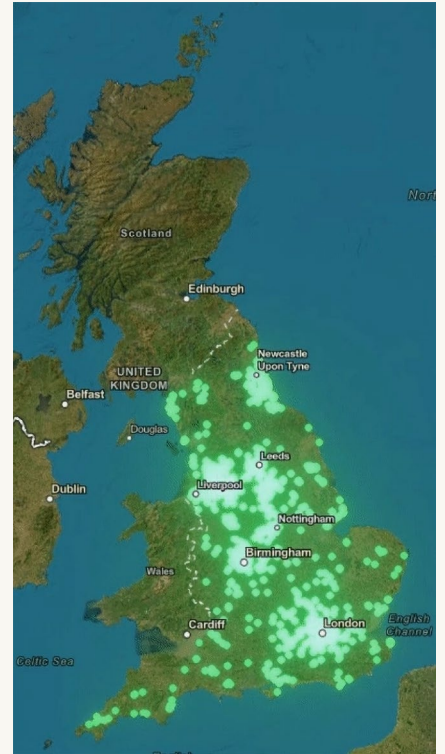
schools and nurseries



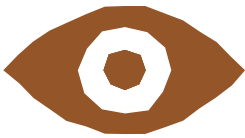
116

teachers

How it's grown



[Hidden Nature Challenge Activity](#)



5,900+

observations

[Habitat Heroes Activity](#)



1,300+

homes for wildlife discovered



more than

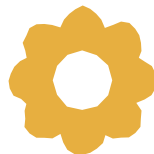
1 in 8

eligible schools and colleges now registered



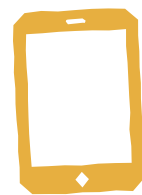
3,000+

schools, nurseries and colleges registered



£5m+

awarded to more than 500 settings



more than

45%

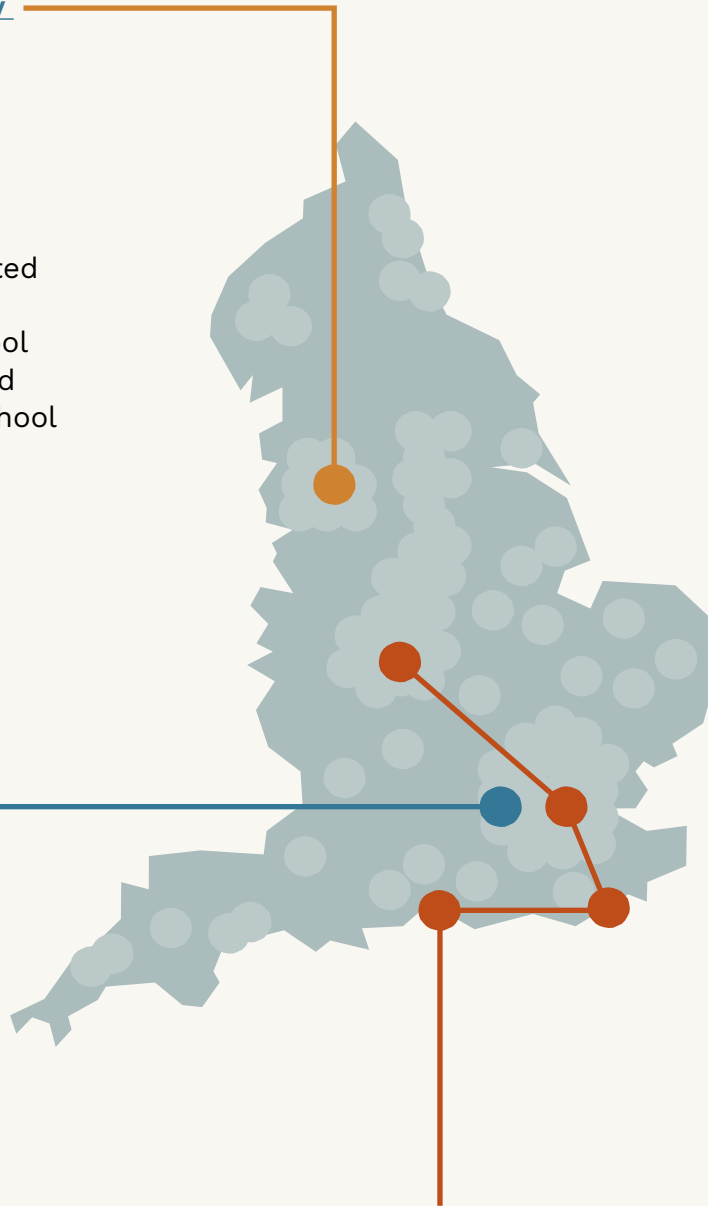
of registered settings have interacted with digital tools

Accurate as of August 2024

Case studies

[Turning a playground from grey to green at St Philip's Primary School](#)

Pupils at St Philip's Church of England Primary School in Atherton followed the Nature Park's five-step process to install a green wall. This created a bright and colourful space for both wildlife and the school community, and even provided homegrown salad for their school lunches!



[Habitat mapping at Reading School](#)

At Reading School in Berkshire – a secondary school with 1,150 students – a Year 13, supported by a member of staff, guided a team of students through the Mapping your site activities so they could understand their starting point and identify areas for improvement.

[Getting closer to nature at Ark Schools](#)

Many of the children at Ark Schools in Birmingham and London who have joined the Nature Park programme have no access to a garden at home or live in temporary accommodation. Ark hopes that through their involvement in the Nature Park, young people will not only learn about their natural environment but also gain wider benefits for their wellbeing and mental health.



“The Nature Park is an exceptional way to learn about the environment and biodiversity. The world is a diverse living thing and the Nature Park activities help us understand it and the things inside it. The information in it is understandable and that’s what I like about it.”

Year 6 pupil,
St Philip’s CofE Primary School, Atherton

“I feel proud for doing the Nature Park because I’m doing good for the environment. I want to see how nature grows.”

Year 7 pupil,
St Mary’s Catholic School, Newcastle



“As a teacher, it can help me enrich the curriculum, it will broaden its strength it, and the children will be able to see that they have an impact and that they have a voice. And that can make a change for the better, for the future.”

Teacher,
Cherry Tree Primary School, Bolton





“I like how easy the activities are to use, and how simple mapping the environment is. I am doing the Nature Park because I love wildlife and nature! I’d love to help conserve nature where I can and do my part”

Year 8 pupil,
St Mary’s Catholic School,
Newcastle



What's happening next for the National Education Nature Park?

Kick off autumn term 2024 with our Hidden Nature Challenge.

More community science resources to build on your baseline habitat map. The Pollinator Count launched in July starting the process of recording the amazing diversity of life on your site. Plus, we're developing new guidance on how to improve your grounds for nature and tools to track your progress in boosting biodiversity.

Extra support and inspiration

- Ongoing regional support in seven regions of England, with all nine regions covered by 2025
- Networking opportunities for teachers and educators, including early years practitioners
- Webinars and case studies from those taking part
- Ideas and guidance to bring nature and climate into the curriculum

Launch of a Schools Forum to bring together educators and young people from different schools to help develop the National Education Nature Park.

Integrate the National Education Nature Park into your Climate Action Plan with support from other Department for Education-commissioned projects including [Climate Ambassadors](#) and the [Sustainability Support for Education](#) online platform.

Upcoming grant applications

The Royal Horticultural Society are administering a second round of the grants for the next academic year and eligible schools have been contacted. Funds can be used for evidence-based biodiversity improvements, outdoor learning or gardening equipment and technology to enable nature discovery.

Other sources of funding can be found on our [Finding Funding](#) page.



Get Involved

educationnaturepark.org.uk



National
Education
Nature Park

Led by



Natural
History
Museum

With



RHS

Working with



esri UK
THE SCIENCE OF WHERE™

Commissioned by



Department
for Education

Partners



Learning
through
Landscapes



Manchester
Metropolitan
University



NBN Trust
Making data work for nature



Royal
Geographical
Society
with IBG
Advancing geography
and geographical learning



UK Centre for
Ecology & Hydrology

THE
ROYAL
SOCIETY